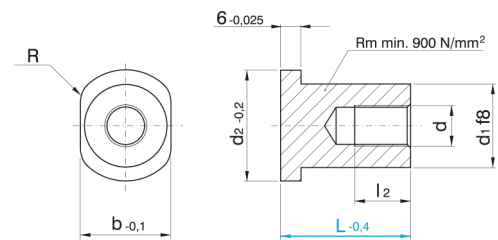
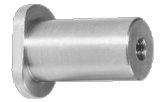


# C1515

## Závitová vložka vyhadzovacího paketu



kód	d	L	d1	d2	b	R	l2
C1515/M6x37	M6	37	20	36	24	8	12
C1515/M6x42	M6	42	20	36	24	8	12
C1515/M8x37	M8	37	20	36	24	8	16
C1515/M8x42	M8	42	20	36	24	8	16
C1515/M8x47	M8	47	20	36	24	8	16
C1515/M8x52	M8	52	20	36	24	8	16
C1515/M10x47	M10	47	30	46	34	11	20
C1515/M10x52	M10	52	30	46	34	11	20
C1515/M10x56	M10	56	30	46	34	11	20
C1515/M10x61	M10	61	30	46	34	11	20
C1515/M12x56	M12	56	30	46	34	11	24
C1515/M12x61	M12	61	30	46	34	11	24
C1515/M12x66	M12	66	30	46	34	11	24
C1515/M12x71	M12	71	30	46	34	11	24
C1515/M12x75	M12	75	30	46	34	11	24
C1515/M16x61	M16	61	30	46	34	11	32
C1515/M16x66	M16	66	30	46	34	11	32
C1515/M16x71	M16	71	30	46	34	11	32
C1515/M16x75	M16	75	30	46	34	11	32
C1515/M16x85	M16	85	30	46	34	11	32
C1515/M16x95	M16	95	30	46	34	11	32
C1515/M20x61	M20	61	40	56	46	11	40
C1515/M20x66	M20	66	40	56	46	11	40
C1515/M20x71	M20	71	40	56	46	11	40
C1515/M20x75	M20	75	40	56	46	11	40
C1515/M20x85	M20	85	40	56	46	11	40

kód	d	L	d1	d2	b	R	l2
C1515/M20x95	M20	95	40	56	46	11	40