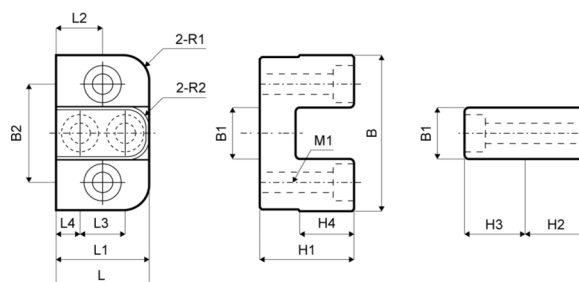


C1413

Zámek horní, kompaktní



kód	B	H1	H2	H	H4	B1	B2	M1	M2	R1	R2	L1	L2	L3	L4	L	povlak
C1413/34	34	18	14	12	11	10	22	M4	M3	8	4	17,5	9	9	4,25	18	bez povlaku
C14139/34	34	18	14	12	11	10	22	M4	M3	8	4	17,5	9	9	4,25	18	DLC
C1413/40	40	22	16	14	13	12	26	M5	M4	10	5	21,5	11	11	5,25	22	bez povlaku
C14139/40	40	22	16	14	13	12	26	M5	M4	10	5	21,5	11	11	5,25	22	DLC
C1413/50	50	30	22	18	17	18	34	M6	M6	10	6	29,5	15	15	7,25	30	bez povlaku
C14139/50	50	30	22	18	17	18	34	M6	M6	10	6	29,5	15	15	7,25	30	DLC
C1413/64	64	40	26	24	23	22	42	M8	M8	10	8	39,5	20	18	10,75	40	bez povlaku
C14139/64	64	40	26	24	23	22	42	M8	M8	10	8	39,5	20	18	10,75	40	DLC
C1413/72	72	46	32	28	27	26	48	M8	M8	10	10	51,5	26	25	13,25	52	bez povlaku
C14139/72	72	46	32	28	27	26	48	M8	M8	10	10	51,5	26	25	13,25	52	DLC
C1413/96	96	57	44	36	31	36	66	M10	M10	10	10	55,5	28	27	14,25	56	bez povlaku
C14139/96	96	57	44	36	31	36	66	M10	M10	10	10	55,5	28	27	14,25	56	DLC