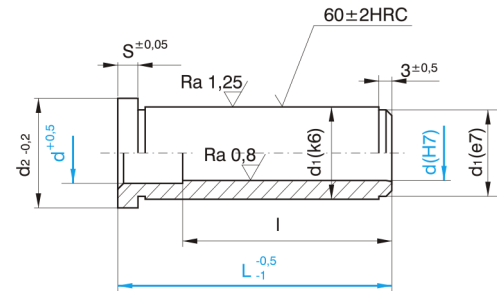


C1210

Vodící pouzdro bez středícího nákrůžku



Materiál: 1.7131, 60±2 HRC
Povrchová úprava: Cementováno, kaleno



kód	d	L	d1	d2	s	l
C1210/9x9	9	9	14	16	3	9
C1210/9x12	9	12	14	16	3	12
C1210/9x17	9	17	14	16	3	17
C1210/9x22	9	22	14	16	3	22
C1210/9x27	9	27	14	16	3	27
C1210/9x36	9	36	14	16	3	36
C1210/9x46	9	46	14	16	3	46
C1210/9x56	9	56	14	16	3	46
C1210/9x66	9	66	14	16	3	46
C1210/10x9	10	9	14	16	3	9
C1210/10x12	10	12	14	16	3	12
C1210/10x17	10	17	14	16	3	17
C1210/10x22	10	22	14	16	3	22
C1210/10x27	10	27	14	16	3	27
C1210/10x36	10	36	14	16	3	36
C1210/10x46	10	46	14	16	3	46
C1210/10x56	10	56	14	16	3	46
C1210/10x66	10	66	14	16	3	46
C1210/14x12	14	12	20	25	6	12
C1210/14x17	14	17	20	25	6	17
C1210/14x22	14	22	20	25	6	22
C1210/14x27	14	27	20	25	6	27
C1210/14x36	14	36	20	25	6	36
C1210/14x46	14	46	20	25	6	46
C1210/14x56	14	56	20	25	6	56
C1210/14x66	14	66	20	25	6	56

Kód	d	L	d1	d2	s	l
C1210/14x76	14	76	20	25	6	56
C1210/14x86	14	86	20	25	6	56
C1210/14x96	14	96	20	25	6	56
C1210/15x12	15	12	20	25	6	12
C1210/15x17	15	17	20	25	6	17
C1210/15x22	15	22	20	25	6	22
C1210/15x27	15	27	20	25	6	27
C1210/15x36	15	36	20	25	6	36
C1210/15x46	15	46	20	25	6	46
C1210/15x56	15	56	20	25	6	56
C1210/15x66	15	66	20	25	6	56
C1210/15x76	15	76	20	25	6	56
C1210/15x86	15	86	20	25	6	56
C1210/15x96	15	96	20	25	6	56
C1210/18x17	18	17	26	31	6	17
C1210/18x22	18	22	26	31	6	22
C1210/18x27	18	27	26	31	6	27
C1210/18x36	18	36	26	31	6	36
C1210/18x46	18	46	26	31	6	46
C1210/18x56	18	56	26	31	6	56
C1210/18x66	18	66	26	31	6	66
C1210/18x76	18	76	26	31	6	76
C1210/18x86	18	86	26	31	6	76
C1210/18x96	18	96	26	31	6	76
C1210/18x116	18	116	26	31	6	76
C1210/20x17	20	17	26	31	6	17
C1210/20x22	20	22	26	31	6	22
C1210/20x27	20	27	26	31	6	27
C1210/20x36	20	36	26	31	6	36
C1210/20x46	20	46	26	31	6	46
C1210/20x56	20	56	26	31	6	56
C1210/20x66	20	66	26	31	6	66
C1210/20x76	20	76	26	31	6	76
C1210/20x86	20	86	26	31	6	76
C1210/20x96	20	96	26	31	6	76
C1210/20x116	20	116	26	31	6	76
C1210/22x17	22	17	30	35	6	17
C1210/22x22	22	22	30	35	6	22
C1210/22x27	22	27	30	35	6	27
C1210/22x36	22	36	30	35	6	36
C1210/22x46	22	46	30	35	6	46

kód	d	L	d1	d2	s	l
C1210/22x56	22	56	30	35	6	56
C1210/22x66	22	66	30	35	6	66
C1210/22x76	22	76	30	35	6	76
C1210/22x86	22	86	30	35	6	86
C1210/22x96	22	96	30	35	6	96
C1210/22x116	22	116	30	35	6	96
C1210/22x136	22	136	30	35	6	96
C1210/22x156	22	156	30	35	6	96
C1210/24x17	24	17	30	35	6	17
C1210/24x22	24	22	30	35	6	22
C1210/24x27	24	27	30	35	6	27
C1210/24x36	24	36	30	35	6	36
C1210/24x46	24	46	30	35	6	46
C1210/24x56	24	56	30	35	6	56
C1210/24x66	24	66	30	35	6	66
C1210/24x76	24	76	30	35	6	76
C1210/24x86	24	86	30	35	6	86
C1210/24x96	24	96	30	35	6	96
C1210/24x116	24	116	30	35	6	96
C1210/24x136	24	136	30	35	6	96
C1210/24x156	24	156	30	35	6	96
C1210/30x22	30	22	42	47	6	22
C1210/30x27	30	27	42	47	6	27
C1210/30x36	30	36	42	47	6	36
C1210/30x46	30	46	42	47	6	46
C1210/30x56	30	56	42	47	6	56
C1210/30x66	30	66	42	47	6	66
C1210/30x76	30	76	42	47	6	76
C1210/30x86	30	86	42	47	6	86
C1210/30x96	30	96	42	47	6	96
C1210/30x116	30	116	42	47	6	116
C1210/30x136	30	136	42	47	6	116
C1210/30x156	30	156	42	47	6	116
C1210/30x176	30	176	42	47	6	116
C1210/32x22	32	22	42	47	6	22
C1210/32x27	32	27	42	47	6	27
C1210/32x36	32	36	42	47	6	36
C1210/32x46	32	46	42	47	6	46
C1210/32x56	32	56	42	47	6	56
C1210/32x66	32	66	42	47	6	66
C1210/32x76	32	76	42	47	6	76

kód	d	L	d1	d2	s	l
C1210/32x86	32	86	42	47	6	86
C1210/32x96	32	96	42	47	6	96
C1210/32x116	32	116	42	47	6	116
C1210/32x136	32	136	42	47	6	116
C1210/32x156	32	156	42	47	6	116
C1210/32x176	32	176	42	47	6	116
C1210/40x36	40	36	54	60	10	36
C1210/40x46	40	46	54	60	10	46
C1210/40x56	40	56	54	60	10	56
C1210/40x66	40	66	54	60	10	66
C1210/40x76	40	76	54	60	10	76
C1210/40x86	40	86	54	60	10	86
C1210/40x96	40	96	54	60	10	96
C1210/40x116	40	116	54	60	10	116
C1210/40x136	40	136	54	60	10	136
C1210/40x156	40	156	54	60	10	136
C1210/40x176	40	176	54	60	10	136
C1210/40x196	40	196	54	60	10	136
C1210/42x36	42	36	54	60	10	36
C1210/42x46	42	46	54	60	10	46
C1210/42x56	42	56	54	60	10	56
C1210/42x66	42	66	54	60	10	66
C1210/42x76	42	76	54	60	10	76
C1210/42x86	42	86	54	60	10	86
C1210/42x96	42	96	54	60	10	96
C1210/42x116	42	116	54	60	10	116
C1210/42x136	42	136	54	60	10	136
C1210/42x156	42	156	54	60	10	136
C1210/42x176	42	176	54	60	10	136
C1210/42x196	42	196	54	60	10	136
C1210/50x56	50	56	66	71	10	56
C1210/50x66	50	66	66	71	10	66
C1210/50x76	50	76	66	71	10	76
C1210/50x86	50	86	66	71	10	86
C1210/50x96	50	96	66	71	10	96
C1210/50x116	50	116	66	71	10	116
C1210/50x136	50	136	66	71	10	136
C1210/50x156	50	156	66	71	10	136
C1210/50x176	50	176	66	71	10	136
C1210/50x196	50	196	66	71	10	136
C1210/50x216	50	216	66	71	10	136

kód	d	L	d1	d2	s	l
C1210/50x236	50	236	66	71	10	136
C1210/50x246	50	246	66	71	10	136
C1210/50x256	50	256	66	71	10	136
C1210/52x56	52	56	66	71	10	56
C1210/52x66	52	66	66	71	10	66
C1210/52x76	52	76	66	71	10	76
C1210/52x86	52	86	66	71	10	86
C1210/52x96	52	96	66	71	10	96
C1210/52x116	52	116	66	71	10	116
C1210/52x136	52	136	66	71	10	136
C1210/52x156	52	156	66	71	10	136
C1210/52x176	52	176	66	71	10	136
C1210/52x196	52	196	66	71	10	136
C1210/52x216	52	216	66	71	10	136
C1210/52x236	52	236	66	71	10	136
C1210/52x246	52	246	66	71	10	136
C1210/52x256	52	256	66	71	10	136