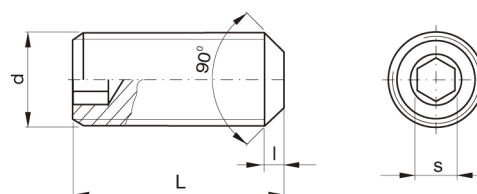


C2008

Stavěcí šroub, DIN913



kód	d	L	s	l
C2008/M3x6	M3	6	1,5	0,5
C2008/M3x8	M3	8	1,5	0,5
C2008/M4x6	M4	6	2	0,75
C2008/M4x8	M4	8	2	0,75
C2008/M4x10	M4	10	2	0,75
C2008/M4x12	M4	12	2	0,75
C2008/M5x6	M5	6	2,5	0,75
C2008/M5x8	M5	8	2,5	0,75
C2008/M5x10	M5	10	2,5	0,75
C2008/M5x12	M5	12	2,5	0,75
C2008/M5x16	M5	16	2,5	0,75
C2008/M6x6	M6	6	3	1
C2008/M6x8	M6	8	3	1
C2008/M6x10	M6	10	3	1
C2008/M6x12	M6	12	3	1
C2008/M6x16	M6	16	3	1
C2008/M6x20	M6	20	3	1
C2008/M8x8	M8	8	4	1,25
C2008/M8x10	M8	10	4	1,25
C2008/M8x12	M8	12	4	1,25
C2008/M8x16	M8	16	4	1,25
C2008/M8x20	M8	20	4	1,25
C2008/M8x30	M8	30	4	1,25
C2008/M10x10	M10	10	5	1,5
C2008/M10x12	M10	12	5	1,5
C2008/M10x16	M10	16	5	1,5

kód	d	L	s	l
C2008/M10x20	M10	20	5	1,5
C2008/M10x30	M10	30	5	1,5
C2008/M10x40	M10	40	5	1,5
C2008/M12x12	M12	12	6	1,75
C2008/M12x16	M12	16	6	1,75
C2008/M12x20	M12	20	6	1,75
C2008/M12x30	M12	30	6	1,75
C2008/M12x40	M12	40	6	1,75
C2008/M16x20	M16	20	8	2
C2008/M16x30	M16	30	8	2
C2008/M16x40	M16	40	8	2