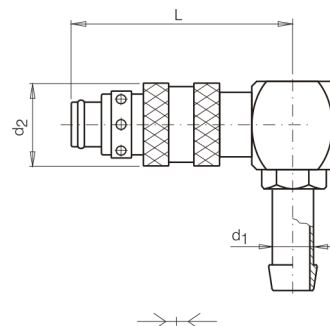
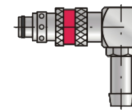


C4300_90

Rychlospojka s trnem pro hadici, 90°



| kód | velikost | d1 | d2 | L | uzavírací ventil |
|------------------|----------|----|----|------|------------------|
| C4300-V/8-6-90 | 8 | 6 | 20 | 64 | ano |
| C4300-V/8-8-90 | 8 | 8 | 20 | 64 | ano |
| C4300-V/8-10-90 | 8 | 10 | 20 | 64 | ano |
| C4300-V/8-12-90 | 8 | 12 | 20 | 64 | ano |
| C4300-V/8-13-90 | 8 | 13 | 20 | 64 | ano |
| C4300-V/12-13-90 | 12 | 13 | 28 | 70 | ano |
| C4300-V/12-16-90 | 12 | 16 | 28 | 70 | ano |
| C4300/8-6-90 | 8 | 6 | 20 | 45,5 | ne |
| C4300/8-8-90 | 8 | 8 | 20 | 45,5 | ne |
| C4300/8-10-90 | 8 | 10 | 20 | 45,5 | ne |
| C4300/8-12-90 | 8 | 12 | 20 | 45,5 | ne |
| C4300/8-13-90 | 8 | 13 | 20 | 45,5 | ne |
| C4300/12-13-90 | 12 | 13 | 28 | 54 | ne |
| C4300/12-16-90 | 12 | 16 | 28 | 54 | ne |