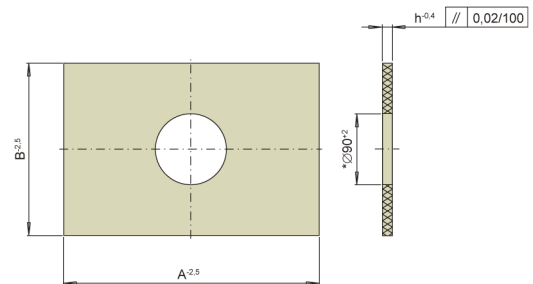
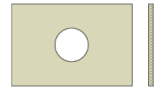


# C2302

## Izolační deska 330 N/mm<sup>2</sup>, s otvorem



kód	A	B	h
C2302/95x95x3-90	95	95	3
C2302/95x95x5-90	95	95	5
C2302/100x130x3-90	130	100	3
C2302/100x130x5-90	130	100	5
C2302/126x156x6-90	156	126	6
C2302/156x156x3-90	156	156	3
C2302/156x156x5-90	156	156	5
C2302/156x156x6-90	156	156	6
C2302/156x206x3-90	156	206	3
C2302/156x206x5-90	156	206	5
C2302/156x196x3-90	196	156	3
C2302/156x196x5-90	196	156	5
C2302/156x196x6-90	196	156	6
C2302/196x196x3-90	196	196	3
C2302/196x196x5-90	196	196	5
C2302/196x196x6-90	196	196	6
C2302/196x206x3-90	196	206	3
C2302/196x206x5-90	196	206	5
C2302/156x206x6-90	206	156	6
C2302/196x206x6-90	206	196	6
C2302/126x246x6-90	246	126	6
C2302/156x246x3-90	246	156	3
C2302/156x246x5-90	246	156	5
C2302/156x246x6-90	246	156	6

kód	A	B	h
C2302/190x246x3-90	246	190	3
C2302/190x246x5-90	246	190	5
C2302/196x246x3-90	246	196	3
C2302/196x246x5-90	246	196	5
C2302/196x246x6-90	246	196	6
C2302/216x246x6-90	246	216	6
C2302/218x246x3-90	246	218	3
C2302/218x246x5-90	246	218	5
C2302/246x246x3-90	246	246	3
C2302/246x246x5-90	246	246	5
C2302/246x246x6-90	246	246	6
C2302/246x246x7-90	246	246	7
C2302/246x254x3-90	246	254	3
C2302/246x254x5-90	246	254	5
C2302/246x254x7-90	246	254	7
C2302/246x276x3-90	246	276	3
C2302/246x276x5-90	246	276	5
C2302/246x266x6-90	266	246	6
C2302/156x296x3-90	296	156	3
C2302/156x296x5-90	296	156	5
C2302/156x296x6-90	296	156	6
C2302/190x296x3-90	296	190	3
C2302/190x296x5-90	296	190	5
C2302/196x296x3-90	296	196	3
C2302/196x296x5-90	296	196	5
C2302/196x296x6-90	296	196	6
C2302/196x296x7-90	296	196	7
C2302/216x296x6-90	296	216	6
C2302/218x296x3-90	296	218	3
C2302/218x296x5-90	296	218	5
C2302/246x296x3-90	296	246	3
C2302/246x296x5-90	296	246	5
C2302/246x296x6-90	296	246	6
C2302/246x296x7-90	296	246	7
C2302/266x296x6-90	296	266	6
C2302/276x296x3-90	296	276	3
C2302/276x296x7-90	296	276	7
C2302/296x296x3-90	296	296	3
C2302/296x296x5-90	296	296	5
C2302/296x296x7-90	296	296	7
C2302/296x296x8-90	296	296	8

kód	A	B	h
C2302/296x296x8,5-90	296	296	8,5
C2302/156x346x6-90	346	156	6
C2302/196x346x3-90	346	196	3
C2302/196x346x5-90	346	196	5
C2302/196x346x6-90	346	196	6
C2302/196x346x7-90	346	196	7
C2302/246x346x5-90	346	246	5
C2302/246x346x6-90	346	246	6
C2302/246x346x7-90	346	246	7
C2302/296x346x5-90	346	296	5
C2302/296x346x7-90	346	296	7
C2302/296x346x8-90	346	296	8
C2302/296x346x8,5-90	346	296	8,5
C2302/346x346x5-90	346	346	5
C2302/346x346x7-90	346	346	7
C2302/346x346x8-90	346	346	8
C2302/346x346x8,5-90	346	346	8,5
C2302/156x396x3-90	396	156	3
C2302/156x396x5-90	396	156	5
C2302/156x396x6-90	396	156	6
C2302/196x396x5-90	396	196	5
C2302/196x396x6-90	396	196	6
C2302/196x396x7-90	396	196	7
C2302/216x396x6-90	396	216	6
C2302/218x396x5-90	396	218	5
C2302/218x396x7-90	396	218	7
C2302/246x396x5-90	396	246	5
C2302/246x396x6-90	396	246	6
C2302/246x396x7-90	396	246	7
C2302/296x396x5-90	396	296	5
C2302/296x396x7-90	396	296	7
C2302/296x396x8-90	396	296	8
C2302/296x396x8,5-90	396	296	8,5
C2302/346x396x5-90	396	346	5
C2302/346x396x7-90	396	346	7
C2302/346x396x8-90	396	346	8
C2302/346x396x8,5-90	396	346	8,5
C2302/396x396x5-90	396	396	5

kód	A	B	h
C2302/396x396x7-90	396	396	7
C2302/396x396x8-90	396	396	8
C2302/396x396x8,5-90	396	396	8,5
C2302/156x446x6-90	446	156	6
C2302/196x446x5-90	446	196	5
C2302/196x446x6-90	446	196	6
C2302/196x446x7-90	446	196	7
C2302/246x446x5-90	446	246	5
C2302/246x446x6-90	446	246	6
C2302/246x446x7-90	446	246	7
C2302/296x446x5-90	446	296	5
C2302/296x446x7-90	446	296	7
C2302/296x446x8-90	446	296	8
C2302/296x446x8,5-90	446	296	8,5
C2302/346x446x5-90	446	346	5
C2302/346x446x7-90	446	346	7
C2302/346x446x8-90	446	346	8
C2302/346x446x8,5-90	446	346	8,5
C2302/396x446x5-90	446	396	5
C2302/396x446x7-90	446	396	7
C2302/396x446x8-90	446	396	8
C2302/396x446x8,5-90	446	396	8,5
C2302/446x446x8-90	446	446	8
C2302/446x446x8,5-90	446	446	8,5
C2302/196x496x6-90	496	196	6
C2302/246x496x5-90	496	246	5
C2302/246x496x6-90	496	246	6
C2302/246x496x8,5-90	496	246	8,5
C2302/296x496x5-90	496	296	5
C2302/296x496x8-90	496	296	8
C2302/296x496x8,5-90	496	296	8,5
C2302/346x496x5-90	496	346	5
C2302/346x496x7-90	496	346	7
C2302/346x496x8-90	496	346	8
C2302/346x496x8,5-90	496	346	8,5
C2302/396x496x5-90	496	396	5

kód	A	B	h
C2302/396x496x7-90	496	396	7
C2302/396x496x8-90	496	396	8
C2302/396x496x8,5-90	496	396	8,5
C2302/446x496x8-90	496	446	8
C2302/446x496x8,5-90	496	446	8,5
C2302/496x496x8-90	496	496	8
C2302/496x496x8,5-90	496	496	8,5
C2302/246x546x6-90	546	246	6
C2302/296x546x5-90	546	296	5
C2302/296x546x8-90	546	296	8
C2302/296x546x8,5-90	546	296	8,5
C2302/346x546x5-90	546	346	5
C2302/346x546x7-90	546	346	7
C2302/346x546x8-90	546	346	8
C2302/346x546x8,5-90	546	346	8,5
C2302/396x546x7-90	546	396	7
C2302/396x546x8-90	546	396	8
C2302/396x546x8,5-90	546	396	8,5
C2302/446x546x8-90	546	446	8
C2302/446x546x8,5-90	546	446	8,5
C2302/496x546x7-90	546	496	7
C2302/496x546x8-90	546	496	8
C2302/496x546x8,5-90	546	496	8,5
C2302/546x546x8-90	546	546	8
C2302/546x546x8,5-90	546	546	8,5
C2302/246x596x6-90	596	246	6
C2302/296x596x5-90	596	296	5
C2302/296x596x8-90	596	296	8
C2302/296x596x8,5-90	596	296	8,5
C2302/346x596x8-90	596	346	8
C2302/346x596x8,5-90	596	346	8,5
C2302/396x596x8-90	596	396	8
C2302/396x596x8,5-90	596	396	8,5
C2302/446x596x8-90	596	446	8

<b>kód</b>	<b>A</b>	<b>B</b>	<b>h</b>
<b>C2302/446x596x8,5-90</b>	596	446	8,5
<b>C2302/496x596x8-90</b>	596	496	8
<b>C2302/496x596x8,5-90</b>	596	496	8,5
<b>C2302/546x596x8-90</b>	596	546	8
<b>C2302/546x596x8,5-90</b>	596	546	8,5
<b>C2302/596x596x8-90</b>	596	596	8
<b>C2302/596x596x8,5-90</b>	596	596	8,5
<b>C2302/596x646x8,5-90</b>	596	646	8,5
<b>C2302/296x646x8-90</b>	646	296	8
<b>C2302/346x646x8-90</b>	646	346	8
<b>C2302/396x646x8-90</b>	646	396	8
<b>C2302/446x646x8-90</b>	646	446	8
<b>C2302/496x646x8-90</b>	646	496	8
<b>C2302/546x646x8-90</b>	646	546	8
<b>C2302/546x646x8,5-90</b>	646	546	8,5
<b>C2302/596x646x8-90</b>	646	596	8
<b>C2302/646x646x8-90</b>	646	646	8
<b>C2302/296x696x8-90</b>	696	296	8
<b>C2302/296x696x8,5-90</b>	696	296	8,5
<b>C2302/346x696x8-90</b>	696	346	8
<b>C2302/346x696x8,5-90</b>	696	346	8,5
<b>C2302/396x696x8-90</b>	696	396	8
<b>C2302/396x696x8,5-90</b>	696	396	8,5
<b>C2302/446x696x8-90</b>	696	446	8
<b>C2302/446x696x8,5-90</b>	696	446	8,5
<b>C2302/496x696x8-90</b>	696	496	8
<b>C2302/496x696x8,5-90</b>	696	496	8,5
<b>C2302/546x696x8-90</b>	696	546	8
<b>C2302/546x696x8,5-90</b>	696	546	8,5
<b>C2302/596x696x8-90</b>	696	596	8
<b>C2302/596x696x8,5-90</b>	696	596	8,5
<b>C2302/646x696x8-90</b>	696	646	8
<b>C2302/646x696x8,5-90</b>	696	646	8,5

kód	A	B	h
C2302/696x696x8,5-90	696	696	8,5
C2302/346x796x8-90	796	346	8
C2302/346x796x8,5-90	796	346	8,5
C2302/396x796x8-90	796	396	8
C2302/396x796x8,5-90	796	396	8,5
C2302/446x796x8-90	796	446	8
C2302/446x796x8,5-90	796	446	8,5
C2302/496x796x8-90	796	496	8
C2302/496x796x8,5-90	796	496	8,5
C2302/546x796x8-90	796	546	8
C2302/546x796x8,5-90	796	546	8,5
C2302/596x796x8-90	796	596	8
C2302/596x796x8,5-90	796	596	8,5
C2302/646x796x8-90	796	646	8
C2302/646x796x8,5-90	796	646	8,5
C2302/696x796x8,5-90	796	696	8,5
C2302/796x796x8,5-90	796	796	8,5
C2302/396x896x8,5-90	896	396	8,5
C2302/446x896x8,5-90	896	446	8,5
C2302/496x896x8,5-90	896	496	8,5
C2302/546x896x8,5-90	896	546	8,5
C2302/596x896x8,5-90	896	596	8,5
C2302/646x896x8,5-90	896	646	8,5
C2302/696x896x8,5-90	896	696	8,5
C2302/796x896x8,5-90	896	796	8,5
C2302/896x896x8,5-90	896	896	8,5
C2302/496x996x8,5-90	996	496	8,5
C2302/546x996x8,5-90	996	546	8,5

<b>kód</b>	<b>A</b>	<b>B</b>	<b>h</b>
<b>C2302/596x996x8,5-90</b>	996	596	8,5
<b>C2302/646x996x8,5-90</b>	996	646	8,5
<b>C2302/696x996x8,5-90</b>	996	696	8,5
<b>C2302/796x996x8,5-90</b>	996	796	8,5
<b>C2302/896x996x8,5-90</b>	996	896	8,5