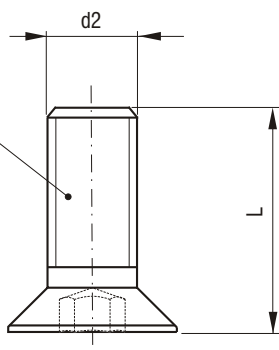
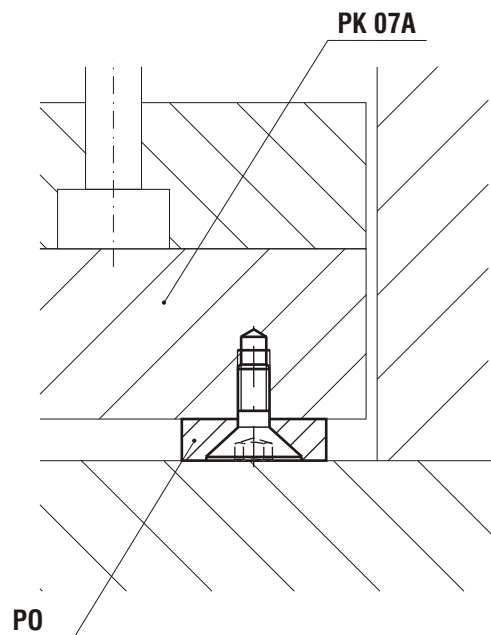


DIN 7991
8.8 (800N/mm²)

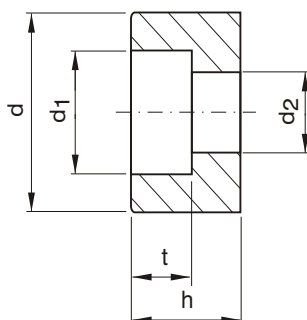


PO



PO

NR KAT.	d	d1	H	d2	L	DIN 7991
PO -1803	18	4,3	3	M4	8	M4x8
PO -2803	28					
PO -2004	20	5,3	4	M5	10	M5x10
PO -3004	30					



POA

d	d1	d2	t	h	NR KAT.
15	11	6,6	8,4	10	POA-1510
22	14,5	9	11	14	POA-2214
36	17,5	11	13,5	20	POA-3620
46	20	14	15,5	25	POA-4625
56	26	18	21	32	POA-5632

30±2 HRC