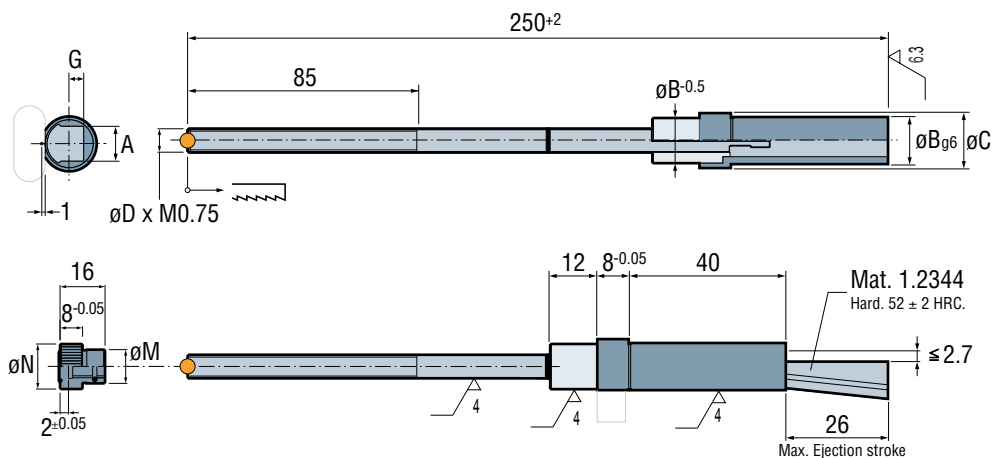


**Standard Lifter
Patin Standard
Schrägschieber
Pattino Standard
Patim Standard
Patin Standard**

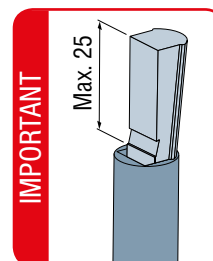
PS

Mat.: INOX. 1.4034
Hardened 48 ± 2 HRC.
Patented System

● Cad Insertion Point



Ref.	A	B	C	D	G	M	N	R
PS.062250	6.2	10	12	6	3.4	12	16	1.25
PS.082250	8.2	12	14	6	4	12	16	1.25
PS.102250	10.2	14	16	8	4.2	14	18	2
PS.122250	12.2	16	18	8	4.2	14	18	2



EN

Mechanical solution.
Minimum space required for installation, only needs the space of an ejector.
No milling, grinding or hardening other than the machining of detail needed.
Saves space in the ejector plates.

ES

Solución mecánica.
Mínimo espacio para su instalación, sólo requiere el espacio de un expulsor.
Sólo es preciso mecanizar el negativo deseado, ni rectificar ni templar.
Ahorra espacio en las placas expulsoras.

DE

Mechanische Lösung.
Geringer Platzbedarf, entspricht dem eines Standard Auswerfers.
Kein Fräsen, Schleifen oder Härten, lediglich die Bearbeitung für das Werkstück (die Kontur) erforderlich.
Spart Platz bei den Auswerferplatten.

IT

Soluzione meccanica.
Spazio minimo per la sua installazione, richiede solo lo spazio di un espulsore.
Da lavorare solo il negativo desiderato, senza rettificare, senza temprare.
Risparmio di spazio nella piastra espulsione.

PT

Solução mecânica.
Espaço mínimo necessário para a sua aplicação, ocupa o espaço de um extractor.
Evita maquinar, rectificar e temperas, somente será necessário maquinar o negativo desejado.
Poupa espaço nas chapas extractoras.

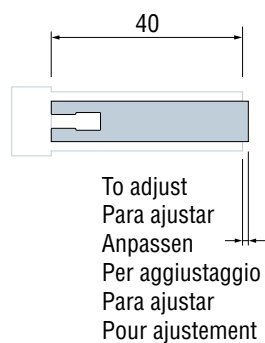
FR

Élément mécanique.
Encombrement minimum, occupe la place d'un éjecteur.
Évite la préparation, l'ajustage, la rectification ainsi que la trempe. Il suffit d'usiner la forme moulante.
Gain d'encombrement dans la batterie d'éjection.

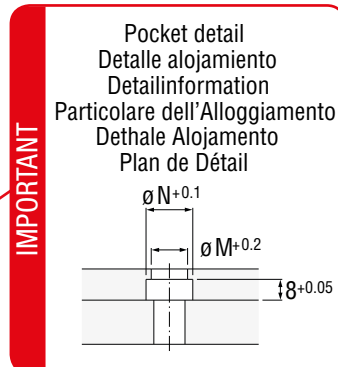
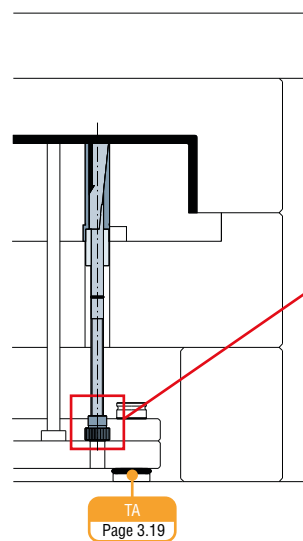
**Lifter Replacement
Recambio Patín
Ersatz Lifterkopf
Pattino di ricambio
Postiço Extra
Insert de Remplacement**

RP

Mat.: 1.2344
Hardened 52 ± 2 HRC.
Patented System



Ref.	for
RP.064000	PS.062250
RP.084000	PS.082250
RP.104000	PS.102250
RP.124000	PS.122250



TA
Page 3.19